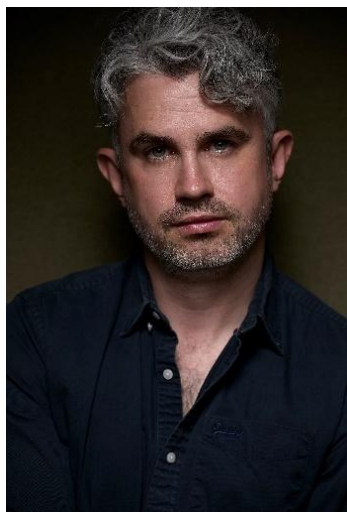




Anthony Gregory Tenor



Hailed by *The Sunday Times*' Hugh Canning as the "Mozart tenor to watch," Anthony Gregory is admired for his unique timbre, stage presence, and musicality. A former Jerwood Young Artist at Glyndebourne and alumnus of both the National Opera Studio and the Royal College of Music, Gregory was named one of opera's future stars by esteemed critic Rupert Christiansen and won the 2015 Breakthrough Artist Award at the WhatsOnStage Opera Poll following his standout performance as Peter Quint in *The Turn of the Screw*. His successes include appearances with Glyndebourne Festival, Royal Ballet and Opera, English National Opera, Festival d'Aix-en-Provence, Teatro Real in Madrid, Bergen Opera, Opernhaus Zürich, Scottish Opera, and Norwegian National Opera in Oslo.

In the 2025–26 season, Gregory makes two highly anticipated debuts, including his return to Opernhaus Zürich in his role debut in the title role of *Glaucus et Scylla* under the baton of Emmanuelle Haïm, and his company debut with Santa Fe Opera as Grimoaldo in *Rodelinda* with Harry Bicket. On the concert platform, he performs *Glaucus et Scylla* with Le Concert d'Astrée, appears as the tenor soloist in Bach's *Mass in B Minor*, performs Handel's *Messiah* with the Irish Baroque Orchestra and Bournemouth Symphony Orchestra, and joins The English Concert and Harry Bicket for a concert at Wigmore Hall.

During the 2024–25 season, Gregory made a series of exciting role and company debuts: as Achilles in *Iphigénie en Aulide* at Greek National Opera, Oronte in *Alcina* at Opera di Roma, and the title role in *Mitridate, Re di Ponto* in a return to Staatsoper Hamburg. Other highlights included his return to the role of Flute in Laurent Pelly's production of *A Midsummer Night's Dream* at Opéra de Lausanne and Haydn's *Nelson Mass* with the Scottish Chamber Orchestra under the baton of Maxim Emelyanychev.

Further operatic highlights include his mainstage debut at the Royal Opera House, Covent Garden, as Ferrando (*Così fan tutte*); a widely praised debut as the Leper in Messiaen's *Saint François d'Assise* at the Elbphilharmonie with Staatsoper Hamburg; Almaviva (*Il barbiere di Siviglia*) for Scottish Opera; Ferrando at Opera North; and Acis in *Acis and Galatea* at Opera Holland Park. He has performed Pane (*La Calisto*) at Bayerische Staatsoper; featured in Christian Spuck's Monteverdi ballet at Opernhaus Zürich; and appeared as Flute in *A Midsummer Night's Dream* at Opéra de Rouen. Other engagements include Don Ottavio in Oslo, Oronte in *Alcina* at Teatro Real and the Festival d'Aix-en-Provence, and multiple roles with Glyndebourne Festival and Tour, including Peter Quint, Don Ottavio, Flute, and Vafrino (*Hipermestra*). He also created the role of Florizel in *The Winter's Tale* and performed numerous roles with English National Opera as a Harewood Artist, such as Colonel Fairfax (*The Yeomen of the Guard*), Nanki-Poo (*The Mikado*), and Haemon (*Thebans*).

In concert, Gregory has performed with many of Europe's leading orchestras and conductors. Notable highlights include *Messiah* with the Royal Scottish National Orchestra, Irish Baroque Orchestra, Dunedin Consort, and English National Opera; *Carmina Burana* with the London Philharmonic Orchestra, Oslo Philharmonic, and Lahti Symphony Orchestra; and Mozart's *Requiem* with the Glyndebourne Chorus and Orchestra. He has sung Bach's *St Matthew Passion* with BBC NOW and Harry Bicket, *St John Passion* with Les Arts Florissants and William Christie, and Bach's *Mass in B Minor* at the Edinburgh International Festival. Gregory appeared at the BBC Proms in Hugh Wood's *Scenes from Comus* and Britten's *Serenade for Tenor, Horn and Strings*, and performed *Savitri* with Britten Sinfonia under Sir Mark Elder. Additional credits include *La concordia de' pianeti* with La Cetra Barockorchester, *Acis and Galatea* with Trevor Pinnock and La Nuova Musica, and a solo recital at the Lufthansa Baroque Festival.

Gregory, previously a Jerwood Young Artist at Glyndebourne, is an alumnus of the National Opera Studio and the Royal College of Music.

Contact:

Maria Mot (Director MWA)

Number: +44 7747 487997

Email:

maria@mwamanagement.com

Charlotte Firth (Senior Artist
Manager)

Number: +44 7827 028791

Email:

charlotte@mwamanagement.com

Tilly Maynard (Assistant Artist
Manager)

Number: +44593454903

Email: tilly@mwamanagement.com



Anthony Gregory is represented by MWA Management worldwide.
2025-26 season / 654words. Not to be altered without permission.